

# 87802

Smart Garage Opener with Integrated LED Corner to Corner Lighting™ System, Battery Backup, Heavy Duty Chain Drive

---



**PRODUCT GUIDE**

**LiftMaster**

POWERED BY myQ.

# 87802

Smart Garage Opener with Integrated LED Corner to Corner Lighting System, Battery Backup, Heavy Duty Chain Drive

---



## Popular features

### Powerful chain drive

Rugged steel construction with precision fabrication for dependable performance, use after use.

### myQ® Connected

Control, secure and monitor the garage from the myQ app anytime, from anywhere.

### Secure in-garage delivery

Enables Amazon Key In-Garage Delivery – free for Amazon Prime members.

### Battery backup

Ensures garage access when the power is out.

---

### Security+ 2.0®

Safeguards garage access by sending a new code with every click of the remote.

### Invisible light beam system

Auto-reverses the garage door if there is an obstruction.

### Automatic Garage Door Lock Capable

Optional Auto Lock (sold separately) deadbolts your garage door after closing.

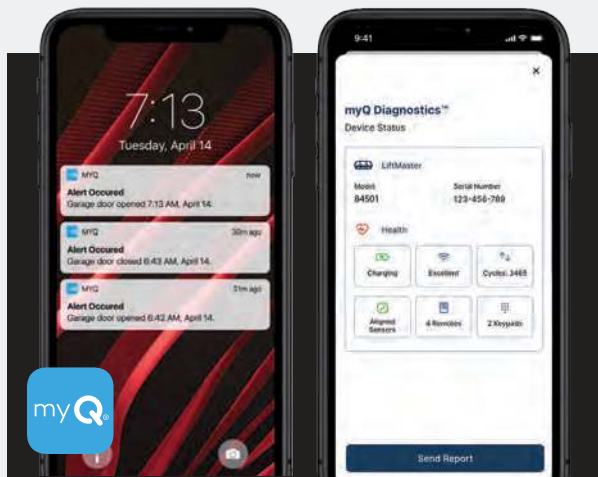
### Motion detection

Lights the way automatically for additional safety.

## Maximum power

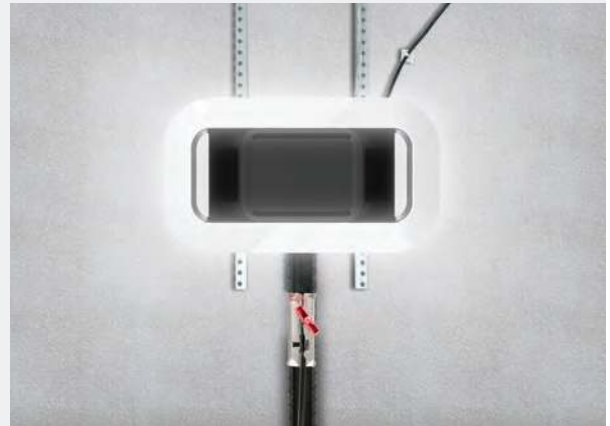
Includes our strongest motor, sturdy I-beam rail system, plus powerful chain drive to lift the heaviest of garage doors.





### Do more with myQ

Use the myQ app to control, secure and monitor your garage and conveniently share and manage access to your home without sharing passcodes or keys. Also, take the hassle out of service repair and easily connect to a trusted Dealer through the myQ app.



### Integrated LED Corner to Corner Lighting System

Increase the functionality of the garage and never change a garage light bulb again. The 2,000 lumens Corner to Corner lighting system provides a 360° ring of LED light that uniformly brightens every corner of the garage.

### In the box

#### 893MAX



#### 3-Button Remote Control

Operates up to 3 openers or myQ light accessories. Safeguards your home with Security+ 2.0.

#### 880LMW



#### Smart Control Panel®

Displays time and temperature, allows for easy programming and automatically activates light when you enter the garage.

#### 485LM



#### Garage Door Opener Battery

Integrated battery back up allows you to open and close your door even when the power is out.

## Specifications

### Motor

12V DC, 53 RPM, Permanent lubrication, lift heavy doors and carriage house doors up to 750 lbs.

### Mechanics

- Steel chassis, I-beam and trolley, full chain drive mechanism (16:1 gear reduction and adjustable door arm)
- Auto-force adjustment for changing weather and environmental conditions, electronic limits for easy setup
- Sprocket 10-tooth-DC
- Wi-Fi logic board with built-in surge suppressor (for replacement logic boards, order part 050DCTBLK)
- 2 lock terminals allow up to 2 locks to be connected (841LM sold separately)

### Power

120V AC, 60 Hz voltage, 3.5A current rating, UL Listed, 6' power cord (3-prong)

### Speed

5.5" per second upward, 6.5" per second downward

### Lighting

2,000 lumens integrated LED (360°)

### Dimensions

Opener head: 10.5" L x 18.7" W x 8.185" H

*Note: when both decorative doors are open, the width of the opener is 30".*

Rail Options:	7' (3707CH)	8' (3708CH)	10' (3710CH)	12' (3712RV)	14' (3714RV)
Installed Length:	124"	139"	163"	188"	212"
Max Opening:	7' 6"	8' 6"	10' 6"	12' 6"	13' 6"

Headroom clearance required: 2"

### Warranties

Lifetime: Motor

5 Year: Parts and LED

1 Year: Accessories and Battery

### Security+ 2.0

Radio controls:

Operating range ~200'; Operating temperature: -40F to 150F; 3-Button Remote Control (893MAX), Remote Control: 310, 315 and 390 MHz Tri-Band (Tri-Band on Security+2.0 coding only, premium remote control is backwards compatible to all LiftMaster® openers manufactured since January, 1993); Garage Door Opener: frequency agile on 310, 315 and 390 MHz; Anti-burglary coding.

Encrypted controls:

Smart Control Panel (880LMW); Timer-to-Close; Program remote controls, keypads and myQ accessories; Maintenance Alert System, easy Wi-Fi setup.

### myQ Radio

902-928 MHz 50-channel FHSS (frequently hopping spread spectrum); Provides 2-way communication from garage door opener and myQ accessories; Enables monitoring and control of garage door openers and lighting controls via smartphone, table or computer.

### HomeLink® compatible (version 4.0 or higher)

May require an external adapter depending on the model and year of vehicle. Visit HomeLink.com for additional information.

### Carton 1 shipping details

Dimensions: 20.1" x 12.1" x 9.7"

Contents: Garage Door Opener Head (87802), Battery (485LM), Smart Control Panel (880LMW), 3-Button Remote Control (893MAX), The Protector System® Safety Reversing Sensors, Safety Sensor Extension Brackets, Chassis Support Bracket  
Weight: 27.99 lbs.

### Carton 2 shipping details

Dimensions: 10'4" x 5" x 5" (for 7' Rail)

Contents: Assembled Solid-Steel Chain I-Beam  
Weight: 33 lbs.



## For purchase and professional install

Visit [LiftMaster.com](https://www.liftmaster.com)

### For partners

Orders: 800.282.6225 | Support: 800.528.2806 | Self service: [LiftMasterTraining.com](https://www.liftmaster.com/training)

© 2021 The Chamberlain Group, Inc. All Rights Reserved.

LiftMaster, the Liftmaster logo, myQ and the myQ logo are registered trademarks of The Chamberlain Group, Inc. UL® and the UL logo are trademarks of UL LLC. Wi-Fi® is a registered trademark of Wi-Fi Alliance. HomeLink® and the HomeLink House® logo are registered trademarks of Gentex Corporation.  
LMGDENPG87802